

www.rotofluidpumps.com

Lubrication

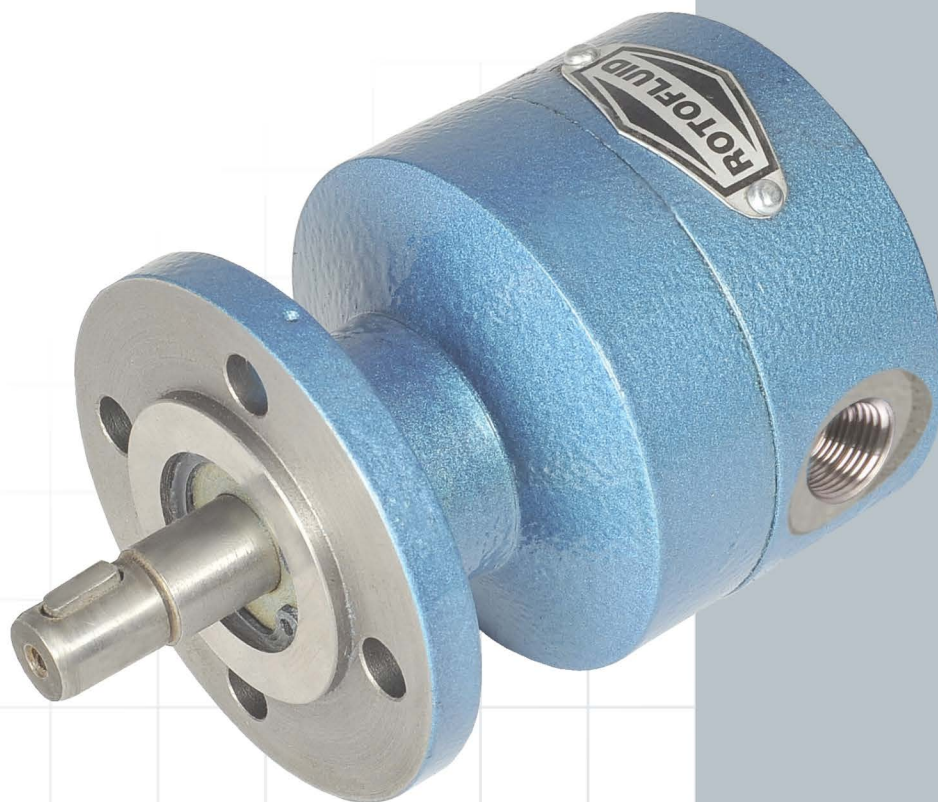
TROCHOID GEARPUMP

Series: FTMP

Perfect Solution
for lubrication



Rotary Gear Pumps
SINCE : 1993



Fluid Tech Systems

Ahmedabad - 382 430. (Guj.) INDIA

एन. एस. आई. सी.
NSIC
ISO 9001 : 2008



*“Let Our
Quality Speak
For Itself”*

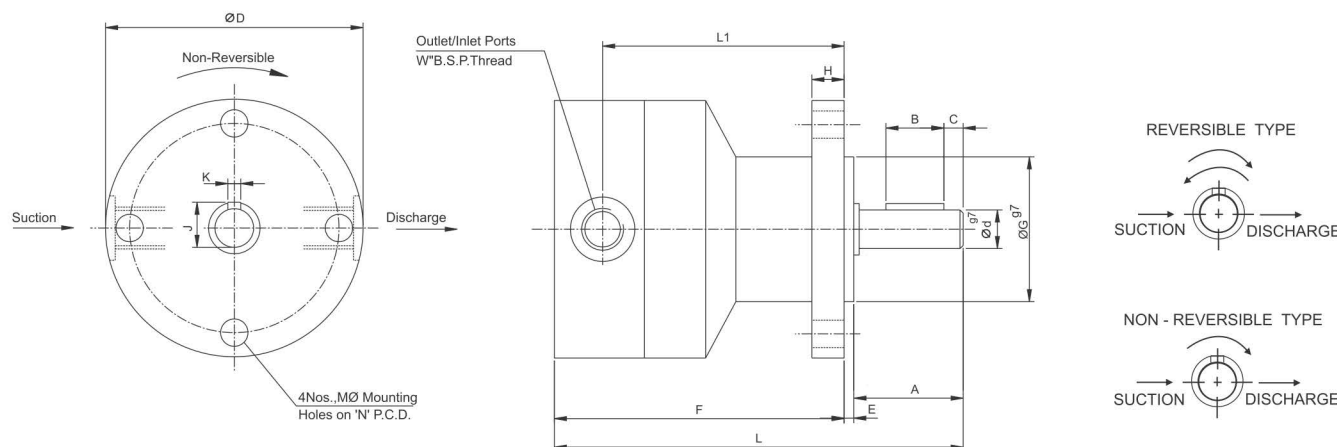


"ROTOFLUID" FLANGE TYPE TROCHOID PUMP



DIMENSION DRAWING

Rotary Gear Pumps
SINCE : 1993



MODAL & DIMENSION DRAWING DETAILS

PUMP MODEL	CAPACITY AT 1440RPM	DIMENSION DRAWING DETAILS IN MM																
		A	B	C	D	D*	d	E	F	G	H	J	K	L	L1	M	N	W (BSP)
FTMP - 0.5	0.5 LPM	16	10	3	50	-	7	2.5	50	30	6	9.2	3	71	40.5	5.0	37	1/8"
FTMP - 1	1 LPM	22	15	3	60	70	10	3	65	35	7	11.2	3	95	53	6.5	45	1/4"
FTMP - 3	3 LPM	22	15	3	60	70	10	3	70	35	7	11.2	3	100	58	6.5	45	1/4"
FTMP - 6	6 LPM	25	18	3	80	92	12	3	89	45	10	13.5	4	130	73	8.5	65	1/4" - 3/8"
FTMP - 10	10 LPM	30	18	3	80	92	12	3	98	45	10	13.5	4	140	83	8.5	65	1/4" - 3/8"
FTMP - 16	16 LPM	40	25	6	115	135	14	4	113	65	14	16	5	165	92	9.0	95	1/2"
FTMP - 25	25 LPM	40	25	6	115	135	14	4	128	65	14	16	5	180	102	9.0	95	1/2"
FTMP - 40	40 LPM	40	25	6	115	135	14	4	146	65	14	16	6	200	116	9.0	95	3/4" - 1"

Note : "L" Brackets for foot mounting are available on request as per requirement.

** REVERSIBLE TYPE

* NON-REVERSIBLE TYPE

ROTARY PUMPS (POSITIVE DISPLACEMENT TYPE)

These are gerotor type pumps with positive displacement of oil. These are suitable for various purposes which require low discharge, medium pressure oil pumps such as lubrication of gear boxes, headstocks, transfer of oil, low pressure hydraulic power packs, rotary oil filters etc. The pumps are suitable for oils with viscosity range 30-1000 cst/40°C.

FUNCTIONWISE PUMPS ARE AVAILABLE OF TWO TYPES

- 1. Non-Reversible :** In these pumps shaft can rotate only as per the direction shown by an arrow on the pump. Suction & Pressure port are indicated accordingly. While ordering please specify the direction of rotation of shaft clockwise or anticlockwise while looking from shaft end.
- 2. Reversible :** In these pumps shaft can rotate either in or direction Suction & pressure ports are indicated accordingly. Minimum R.P.M. of shaft required is 500.

SELECTION OF A SUITABLE PUMP

1. First, Select the type of pump as per the design & space of the machine.
2. Select the size as per the oil capacity required.
3. Check power requirement of drive element taking into consideration size and maximum working pressure.
4. Check direction of rotation of pump shaft and accordingly connect suction port to the suction side and output port to the pressure line.
5. Check suction height is within limits. Suction height shall not be more than 1000 mm at 1500 rpm of shaft with oil viscosity 68 cst. For higher viscosity this has to be reduced.
6. Also suction tube and suction strainer shall be of proper size to avoid cavitation.
7. **Use proper suction strainer. This is very important for pump life.**
8. Use relief valve as per requirement to avoid unnecessary loading of pump.

* All dimensions are in millimeters. Unless otherwise stated, specifications are subject to change without prior notice as improvements are made from time to time.

Mfgd. by :

An ISO 9001:2015 Certified Company



Fluid Tech Systems

Ahmedabad - 382 430. (Guj.) INDIA

E-mail : info@rotofluidpumps.com, marketing@rotofluidpumps.com

Website : www.rotofluidpumps.com

Distributor :